

# Future of ERAS at Queen's Medical Center

9/27/2019



**THE QUEEN'S  
HEALTH SYSTEMS**

# Future of ERAS at Queens

- Initiation of ERAS in other specialties
  - ENT
  - Spine
  - CABG
  - Urology
  - General Thoracic
- Creation of Base Order Sets in EPIC
- Pre-Surgery Center
  - Increase utilization
  - Telemedicine
- Pain management
  - CAPA (Clinically Aligned Pain Assessment Tool)

# Pre-Surgery Center- Telemedicine Update

9/27/2019



**THE QUEEN'S  
HEALTH SYSTEMS**

# The Pre Surgery Center (PSC)

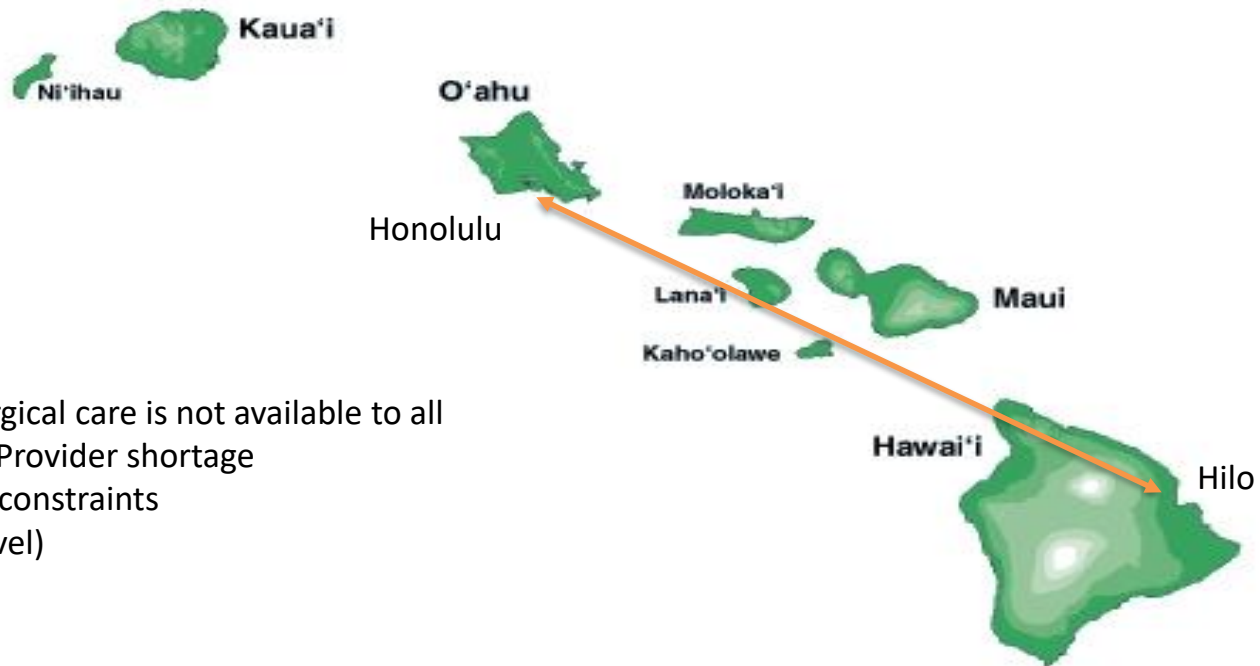
## Pre-operative Evaluations

Last Year 9238 patients underwent elective surgical procedures at the QMC Punchbowl Main OR, 29.4% of those patients were referred to PSC for pre-surgical evaluation

Pre-operative evaluation has shown to reduce surgical cancellation, shorten length of stay, reduce complications and surgical site infections, improve patient satisfaction, reduce hospital readmissions, and save money

Despite the higher incidence of medical comorbidities in patients who were referred to PSC, patients who were not evaluated by PSC last year had longer length of hospital stay (4.27 days versus 3.78 days) and higher rates of hospital readmission (5.71% versus 5.3%).

# Challenge: Lack of Access



Access to Pre-surgical care is not available to all

- Primary Care Provider shortage
- Geographical constraints
- Costly (air travel)

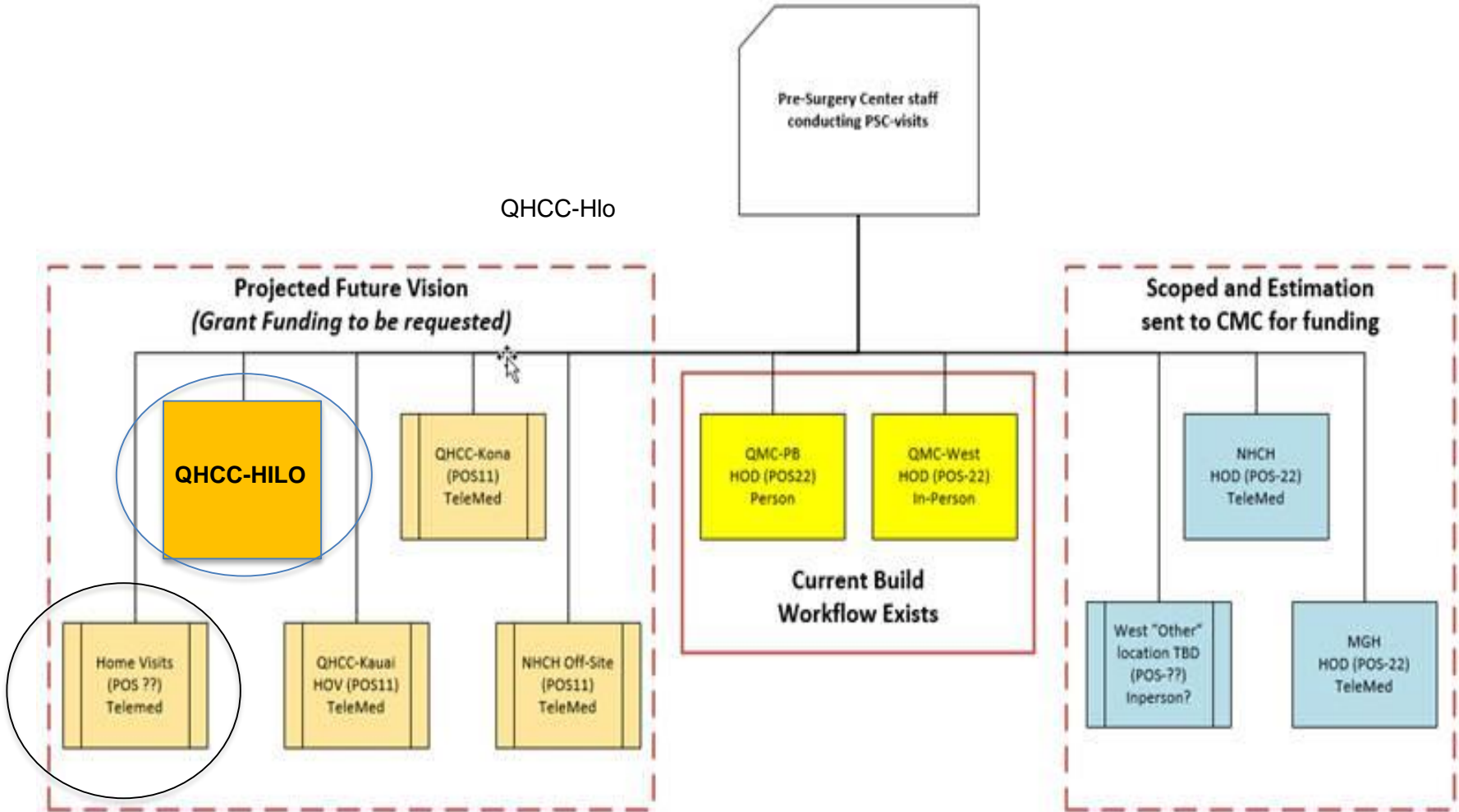


# Solution: Leverage Telemedicine Technology



Develop a telemedicine program to increase preoperative screening and evaluation of Neighbor Island patients scheduled to undergo elective at our institution, thereby, reducing LOS, readmission, and pre-operative anxiety.

# Pre-Surgery Center Expansion Vision

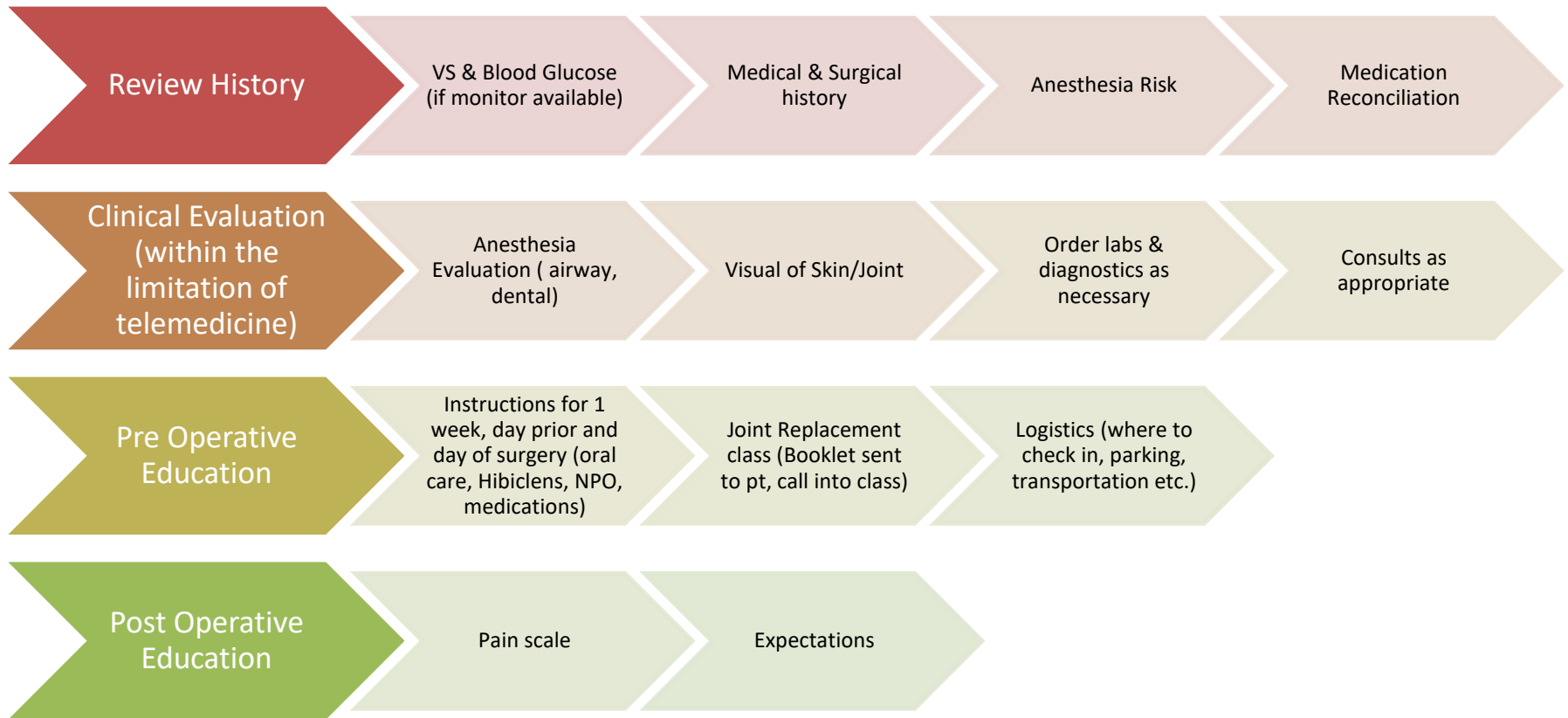


## Two Telemedicine Pilot Projects completed

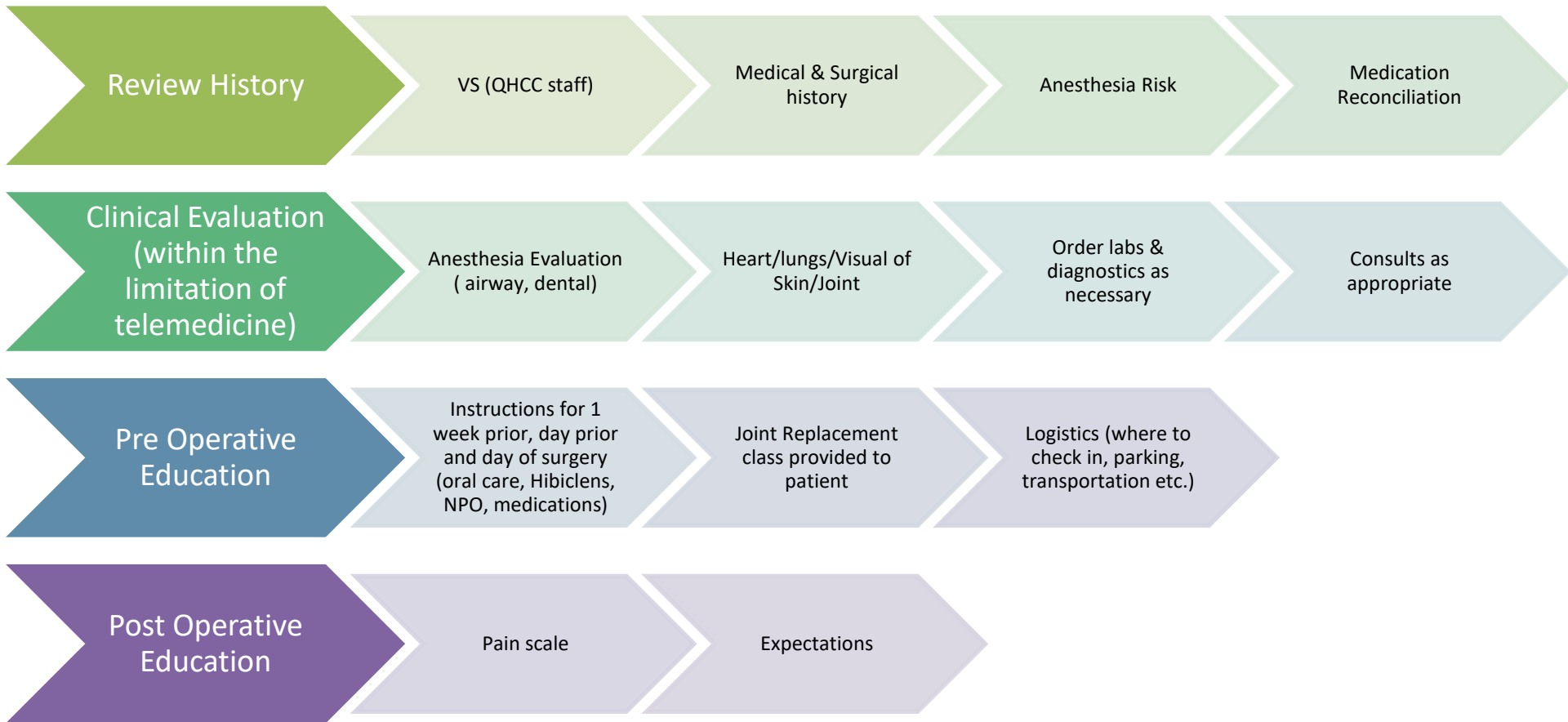
- QHCC- Hilo Clinic
  - Face to face video conference
  - Advanced technology- able to auscultate heart/lungs, skin check
  - QHCC Kona & HNCH outpatient clinic – available in next few months
- Virtual Home Visits- Zoom App technology
  - Cloud based video conferencing technology
    - PC (Windows, Mac)
    - Smart Phone & Tablets (Android and iOS)
    - App free & easy to use



# Virtual Home Visit - Zoom video conference



# Clinic-to-Clinic visit - QHCC Hilo



# Current Status

Defined Pre-Surgical Evaluation Telemedicine visit and what will occur in virtual home visits and virtual clinic visits

Acquired equipment and licenses to enable Virtual Home Visits and Clinic-to-Clinic visits

Installed telemedicine equipment in other Clinic-to-Clinic areas on the Big island (Kona, Waimea) to increase accessibility

In progress---Build telemedicine foundational build and workflows in CareLink, Queen's electronic Medical Record, to aide in scheduling, billing, and documentation of telemedicine visit

Established QHCC Block Time to allow practitioners to utilize the "time-share" space on the big island

# Next Steps

Continue to Follow patients and the programs effect on LOS, Re-Admissions, SSI, and Cost of Care

Expand Pre-Surgical Evaluations to all QHS orthopedics providers and patients that have procedures at QHS facilities

Integration of Pre-Surgical Evaluations at Hale Ola Pono primary care clinic in Waimea via telehealth

Installation of telemedicine equipment at QHCC Kona Specialty Care Clinic

Establish Block Time at QHCC Kona

Integration of Pre-Surgical Evaluations at QHCC Kona via telehealth

Expand Pre-Surgical Evaluations via telehealth to other providers and patients that have procedures completed at QHS facilities

Installation of telemedicine equipment at QHCC Kauai Specialty Care Clinic

Establish Block Time at QHCC Kauai

Integration of Pre-Surgical Evaluations at QHCC Kauai via telehealth

Integration of Pre-Surgical Evaluations at all QHCC Clinics and QHS facilities via telehealth

- CAPA (Clinically Aligned Pain Assessment tool)

Mary Bedell, Clinical Nurse Specialist (Iolani 2/9E)

Sharon Davo-Otomo, BSN, RN-BC, CNIV (Iolani 2)

Kelsie Bordonada, BSN, RN-BC, PCCN, CNIV (9E)

Revelina Bagay, Clinical Operations Manager (

CAPA pain assessment tool evaluates the following:

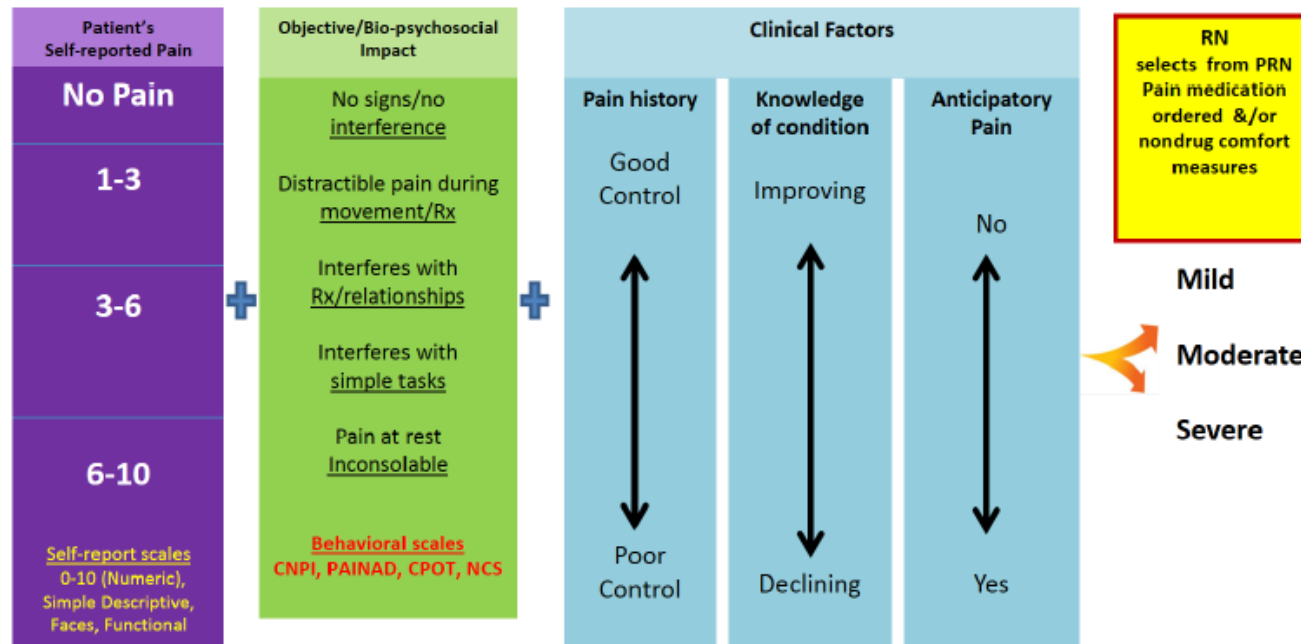
- ✓ Intensity of pain
- ✓ Effect of pain on functionality
- ✓ Effect of pain on sleep
- ✓ Efficacy of therapy
- ✓ Progress toward comfort.
- ✓ It is a social transaction between the clinician and patient and manages expectations of pain control.



## PRN PAIN MEDICATION SELECTION GUIDELINES: MILD-MODERATE-SEVERE

### PAIN ASSESSMENT

Patient's Self-report + Objective Assessment + Clinical Judgment = Mild-Moderate-Severe



#### Important consideration

Decrease the need for PRN opioid analgesics by discussing with healthcare team the feasibility of scheduling routine non-opioid pain medications

Mahalo!